

**Holistic factory planning: general development planning, architectural design, process-compliant layout design and professional implementation services.**

## Planning for Healthy Growth.

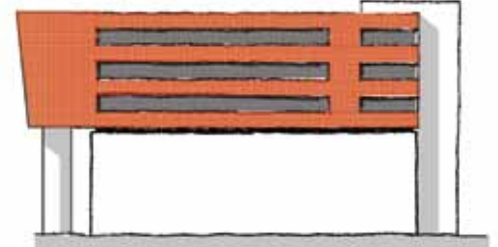
At packaging machine manufacturer Bausch + Ströbel, all signs point to growth. As with many successful companies, Bausch + Ströbel's management team understands that smart business practices always pay off; as such, the company decided to incorporate the most stringent lean methods into the operation and expansion of its facility in Ilshofen, Germany. But with a strong emphasis on structure, is there any room left for creative, sophisticated design?



Original Design



Ingenics' Suggestion



It's a fact: companies that optimize their processes to channel their growth in good times are best able to weather the storm in bad times. A case in point: Bausch + Ströbel. Thanks to its lean infrastructure, the company did not have to cut jobs or reduce working hours during the recent economic crisis, and is now ready to once again tackle future growth, with expansion plans that include a new assembly hall and picking center. The project recently kicked off with an upgrade to the company's technology building, with more than 17,000 square feet of office space to accommodate over 100 employees. The construction is scheduled to take approximately seven months.

Choosing to go lean right from the start, Bausch & Ströbel commissioned Ingenics to be their go-to partner in overseeing the project, including initial concept planning, analysis of internal communications, lean office planning and furnishing, relocation planning, and the entire project management during the design and tender phase.

### Designing value.

As part of its approach to designing the project, Ingenics provided Bausch + Ströbel with a blueprint for the architecture of its building extension. What does architecture have to do with lean processes and systems? In fact, optimizing the layout of a space, right down to its furnishings, can be as important as providing functional support to help a company maximize value. While overall processes and individual skillsets are central to achieving value in production and administration, we also know that staff motivation goes a long way – and motivating factors include the comfort and convenience of an employee's surroundings, in addition to things like corporate philosophy, management values, and collaborative leadership. This is especially true in office settings, where sparking employee creativity and enthusiasm can help drive corporate success.

The importance of an impressive architectural blueprint proved true recently when Bausch +

Ströbel held its annual family day, with more than 4,500 in attendance. Employees proudly escorted their families and friends through the new and the existing work spaces. Other visitors included former staffers and local officials, including the District Administrator and the Mayor – all expressing their excitement about Bausch + Ströbel's continued growth, and their hope that it will influence growth across the entire economic region.

Birds-eye view of the plant development

